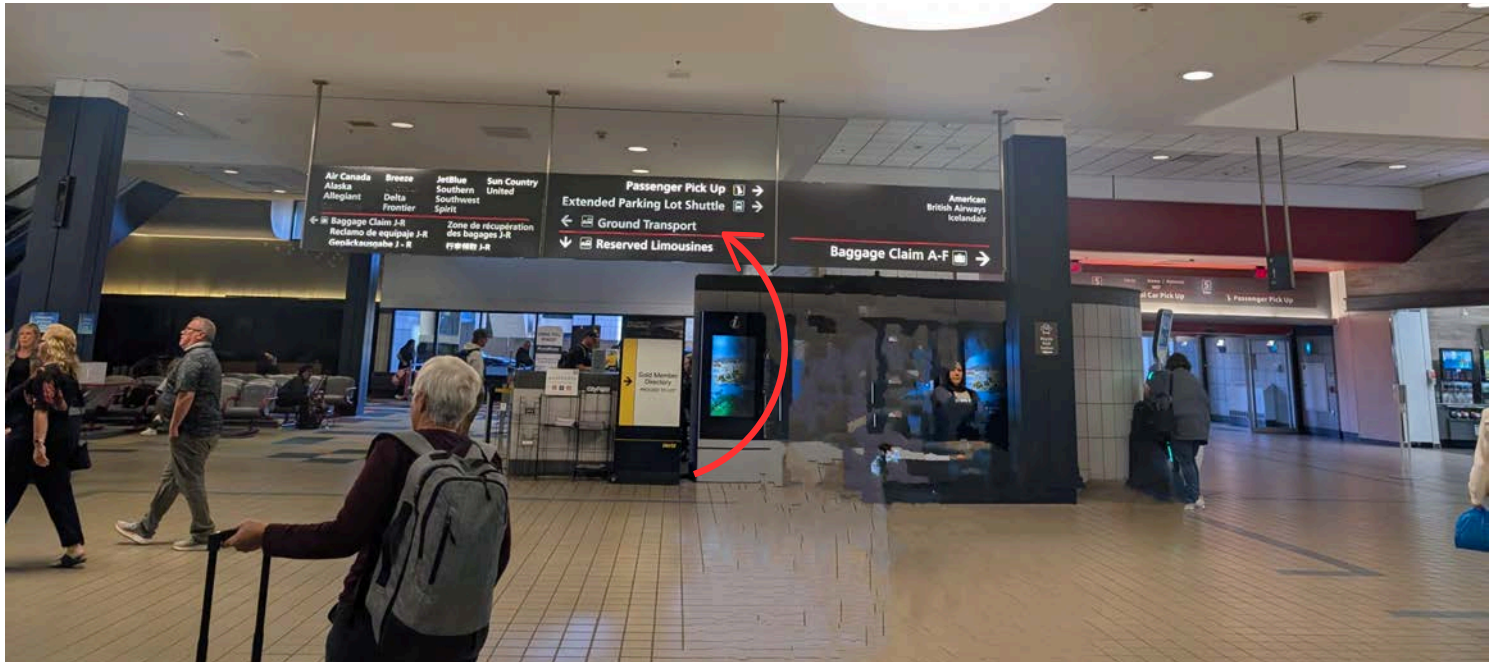


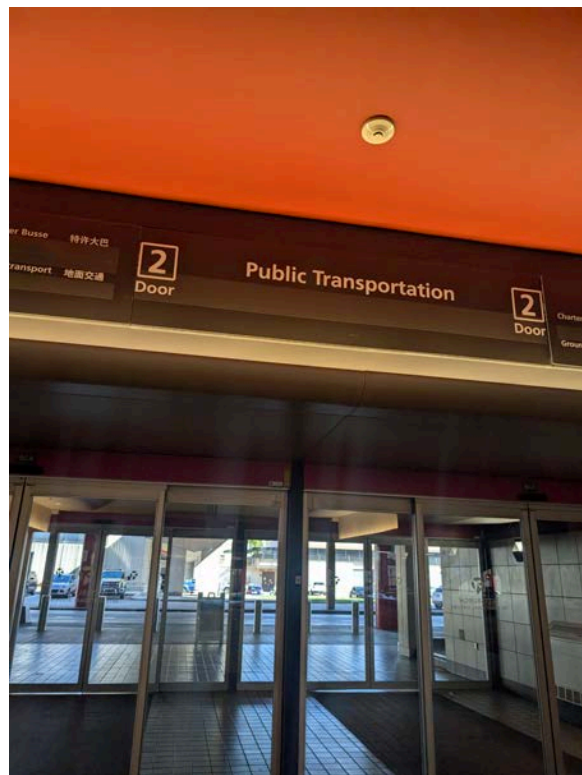
Navigating PRT Airport Flyer 28x

[Link to 28X Schedule](#)

1. After exiting tram, follow signs to Ground Transport, which will be near the baggage claim area (J-R).



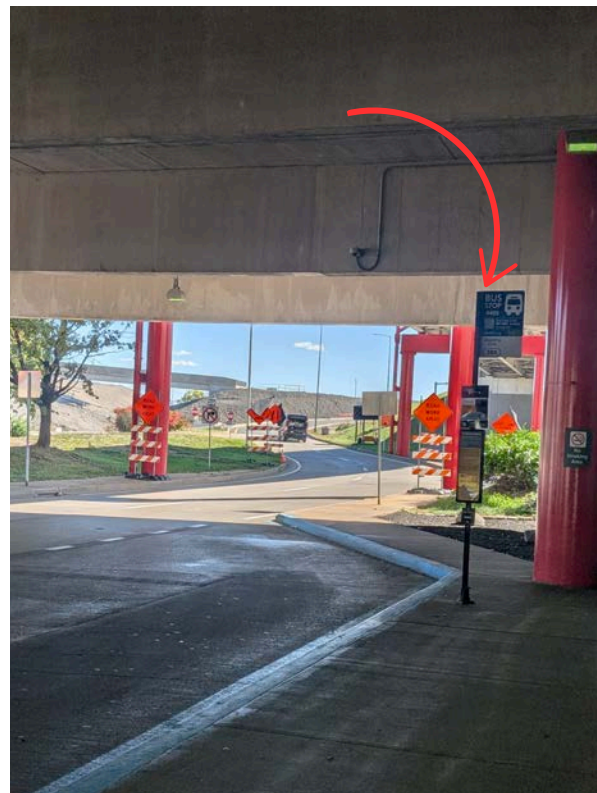
2. Follow the corridor to Door 2, which is for Public Transportation



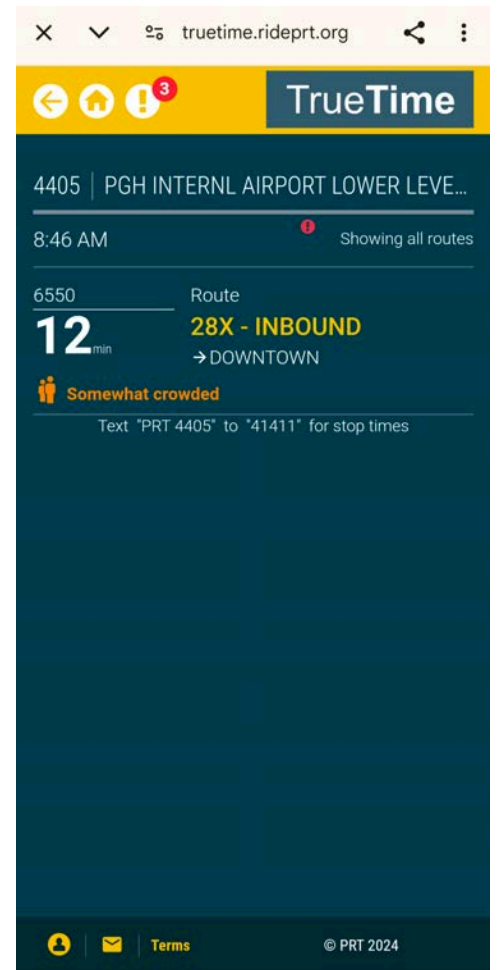
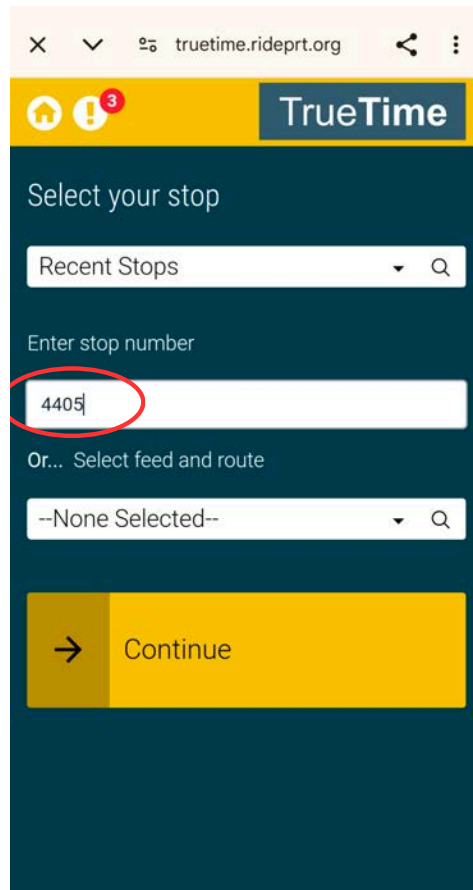
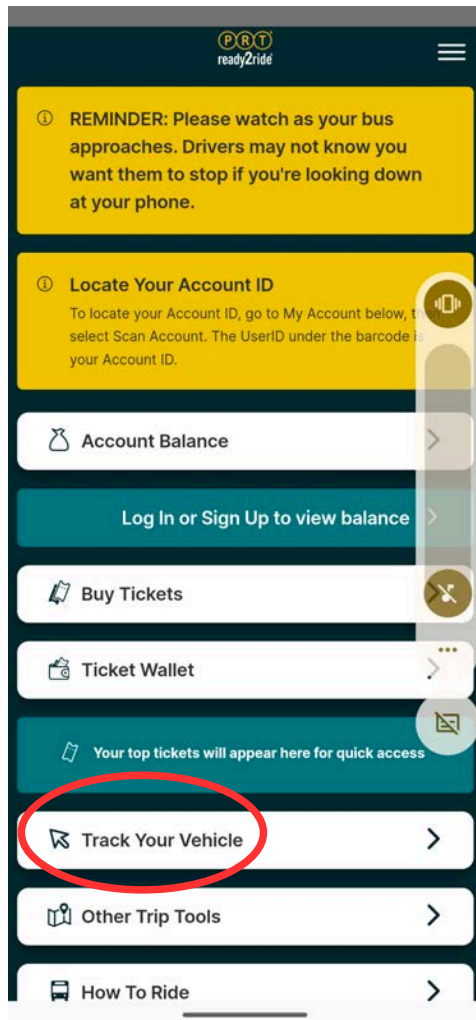
3. You will know you are in the right area when you exit because you will see Charter Buses/Public buses marked on the red pole



4. You will also see a PRT Bus Stop sign (this is where the bus will stop)



5. You can track the location of the next bus by using your Port Authority Ready to Ride app. On the main page, click “Track your Vehicle” and “Enter Stop Number” and utilize 4405. You can also text PRT 4405 to 41411



6. You should expect to be on the bus 50 min-1 hour.

Hampton Inn Pittsburgh University/Medical Center
3315 Hamlet St, Pittsburgh, PA 15213

The stop for above hotel is **Craft Avenue** (right in front of UPMC Magee-Womens Hospital. Be sure to pull the signal line to alert the driver you wish to get off by the time you see the hospital). The bus is synced with google maps, so you can also follow the route along on your phone (see next page for pictures)

